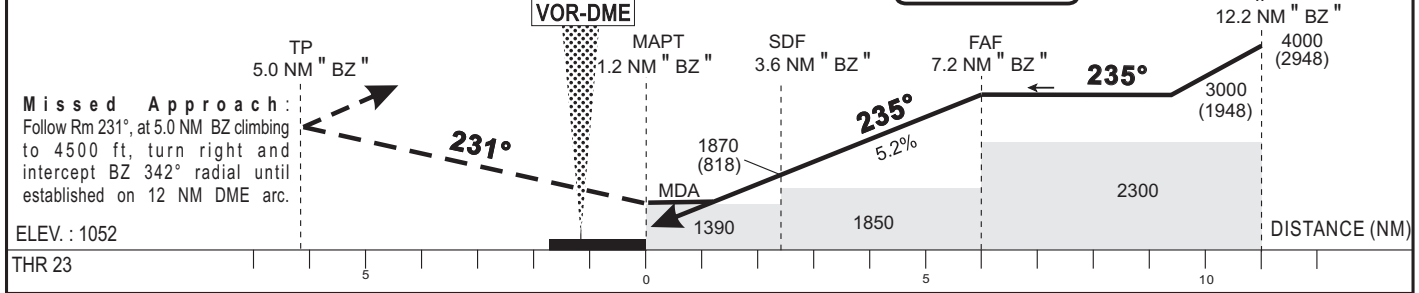


Distance to BZ (NM)	FAF				5	4	3	TRANSITION ALTITUDE: 4500	
Altitude (ft)	3000				2300	1980	1660		



CAT	VOR-DME			Circling (2)				RVR for take-off	
	OCA (OCH)	MDA MDH	RVR(1)	OCA (OCH)	MDA MDH	VIS	CATA - B - C	CAT D	
A	1385 (333)	1390 (340)	1500	1870 (818)	1870 (820)	1500	400	400	
B	1385 (333)	1390 (340)	1500	1870 (818)	1870 (820)	1600			
C	1385 (333)	1390 (340)	1800	2079 (1027)	2080 (1030)	2400			
D	1385 (333)	1390 (340)	2000	2079 (1027)	2080 (1030)	3600			

Timing	FAF/THR 6.0 NM						
	KT	MIN	SEC	KT	MIN	SEC	
90	4	Min	00	140	2	Min	34
100	3	Min	36	150	2	Min	24
110	3	Min	16	160	2	Min	15
120	3	Min	00	170	2	Min	07
130	2	Min	46	180	2	Min	00

**Notes:**

- (1) Without approach lights
- (2) Daytime only - OCH and MDH AAL
- Climbing sector between 033° and 308° BZ radials

CORRECTIONS: Magnetic variation.